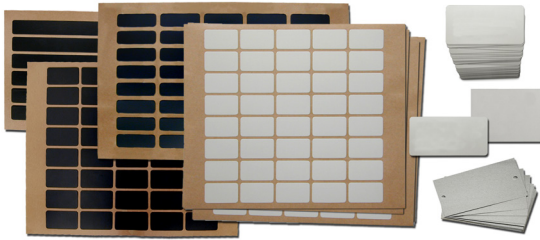


Application: Laser Markable Blank Labels and Data Plates for On-Site Marking



Marking asset labels on-site can be favorable to buying labels. When lead times are short or you need access to real-time production of labels, on-site printing is the solution. And when permanent, durable labels are required, laser marking on metal is the solution of choice.

Camcode offers an extensive selection of laser markable metal blanks. Our products are precisely fabricated, laminated with industrial strength adhesives and conveniently packaged for immediate use. We support all types and powers of lasers from a 15 watt CO₂ to ND YAG and Fiber lasers. We manufacture both stock and custom sizes, including custom shapes, for any application.

Camcode is the most professional and experienced manufacturer of laser blanks. All of our label materials are manufactured in our facility for the ultimate control over material quality and consistency. Let us satisfy your label requirements for your most demanding applications.

Camcode Laser Products Selection Guide

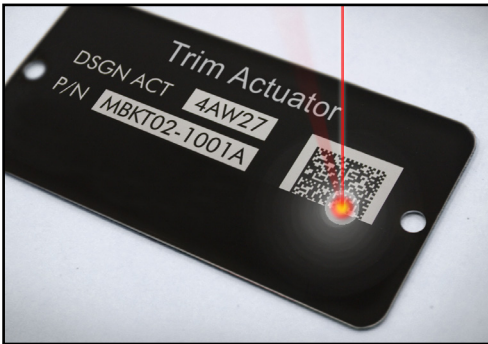
Product	Compatible Laser Type	Description
DuraBlack® ALUMINUM	Any CO ₂ laser	The most durable CO ₂ markable aluminum in the market. Inorganic black colorant. Marks quickly, easily. High contrast mark on a black background. <ul style="list-style-type: none"> - Recommended outdoors - Recommended blowing sand - Recommended chemical environment MARK, CLEAN, USE
AlumaMark® BlackPLUS™ ALUMINUM	Any YAG or Fiber laser	The most durable YAG/Fiber markable aluminum in the market. Inorganic black colorant with satin finish. Marks quickly, easily. High contrast mark on a black background. <ul style="list-style-type: none"> - Recommended outdoors - Recommended blowing sand - Recommended high heat - Recommended chemical environment MARK and USE
AlumaMark Natural ALUMINUM	CO ₂ Lasers 50 watts or less	The only natural color laser markable aluminum that produces black graphics on a natural background. High contrast. Durable with Overcoat. MARK, OVERCOAT, USE
Stainless Steel	Any CO ₂ or YAG or Fiber laser	Ultimate durability Stainless Steel with fused ceramic marks. Black on a natural background. <ul style="list-style-type: none"> - Recommended outdoors - Recommended blowing sand - Recommended high heat - Recommended chemical environment MARK, CLEAN, USE

Note: Users must test products in the specific environment anticipated.
 Camcode does not warrant performance of its materials in any environment.

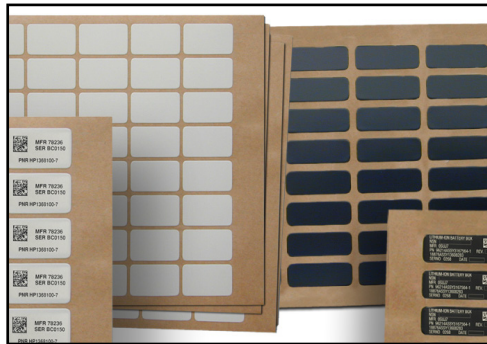
Application Considerations

Camcode provides the product variety and the production expertise to make your project successful. For instance, our foil labels fit into tight spaces and wrap around curved surfaces. Our rigid labels take a pounding and can be fabricated into almost any shape.

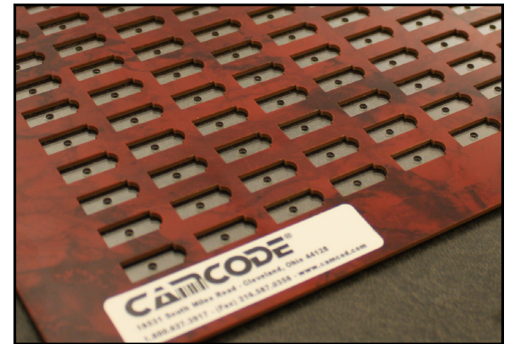
In addition to 100 label sizes and a dozen adhesives to choose from, Camcode provides exclusive tools to keep your production at maximum efficiency. Our foil labels come to you in precisely die cut sheets that perfectly locate the label blank on your laser bed every time. For rigid parts we have perfected a laser jig which can be loaded with blanks and then placed onto the laser bed to maintain perfect registration and streamline production. Accuracy, speed and consistency are our goals.



Supports all lasers



Foil label sheets

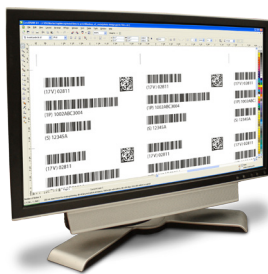


Precision laser jigs

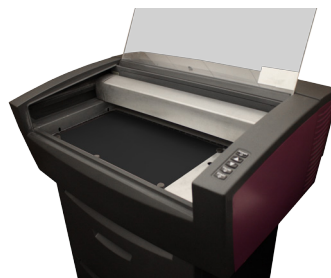
Our product choices allow you every option to fulfill your objectives. We have three kinds of aluminum and stainless steel. And best of all, they are all made in our own facility where raw material standards are strictly controlled and quality results can be predicted. Other materials in the market come from various sources with significant variability and changes in alloy or color consistency. Camcode offers branded products produced under ISO 2000 standards and certified.

Just choose a product based on your laser type and your application and then pick the size or sizes that best fit.

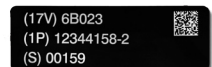
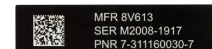
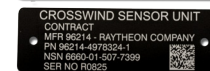
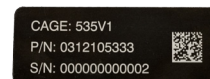
Laser Markable Label Process



1. Design your label graphic.



2. Load and mark material.



3. Mount your parts.

**For free samples or to order: contact Camcode at 800-627-3917
or email customer_service@camcode.com**