

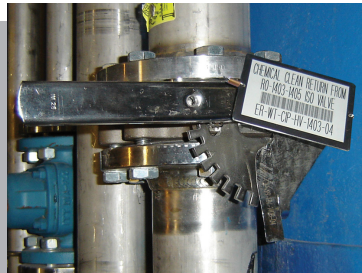
Application: Utility Asset Tracking

Efficient Asset Management Systems Begin with Camcode[®] Bar Code Asset Tags

Pole Tags



CMMS Tags



Camcode Stands For...

Durability: Metalphoto[®] Bar Code Tags withstand abrasion, intense temperatures and weather conditions, and exposure to UV, chemicals and solvents.

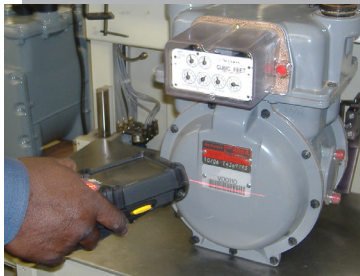
Compatibility: Proven to integrate easily with leading asset management systems.

Long Life: Bar codes remain readable for 30 years even in the harshest conditions.

Accuracy: Virtually eliminates errors caused by manual data collection.

Efficiency: Perform field data acquisition with productivity and reduced labor costs.

Cost-Effective: Camcode Bar Code Asset Tags pay for themselves in increased productivity and reduced rework.



Meter Badges



Asset Tags

From CMMS to Joint Use, Camcode's highly durable anodized aluminum bar code labels will last the life of your assets. That's because the image is sealed below the surface of the label creating an impenetrable barrier to sunlight, water, salt, chemicals and temperatures up to 650°F. And, Camcode's bar code labels pay big dividends when properly integrated into your asset management system...

Camcode's [Meter Tags](#) improve meter and ERT inventory control and traceability, help track rework and refurbish history, and reduce meter to ERT calibration time.

Camcode's [Pole Tags](#) are an integral part of Joint Use systems that increase rental revenue, improve asset tracking, and streamline repair and service calls. They also improve the accuracy of maintenance records, and the work-history reporting process, for Pole Maintenance and Repair applications.

Camcode's CMMS Asset Tags are relied on to correctly identify distinct assets and initiate Work Orders. For Conditions Monitoring, our bar code labels are used to identify measurement points and time/date stamp measurement activities.

Utilities have proven that Camcode bar code labels improve profitability through efficiency, accuracy and even revenue generation gains. Contact us today!

Material specifications on reverse side.

For permanence, long life and high readability, the bar code label designed to perform in any environment is Camcode's Metalphoto®. Made from quality anodized aluminum, Camcode labels outlast conventional bar code labels. Images are crisp and clear, sealed beneath a sapphire-hard anodic surface. And that means, exceptional durability under the most stressful conditions.

We can custom design a bar code [utility tag](#) for a variety of applications; add additional colors, your corporate logo or other human-readable information. With pressure sensitive adhesives, you can affix Camcode labels to virtually any surface. We can also provide mounting holes for mechanical attachments.

Call us if you'd like more information, a free sample, or a fast quotation. Camcode is the permanent solution.

Product Specifications

material	1100 Series Alloy H14 to H19 temper, anodized aluminum. Thicknesses of .003, .005, .008, .012, .020, .032, .063, .125. Black and silver images sealed within the anodic layer.
abrasion resistance	Over 7000 cycles with tabor abraser with Cs17 wheel, 1000 gram load results in no pronounced loss of readability.
heat resistance	Standard SO354 material shows no pronounced loss of readability when exposed to temperatures up to 650°F. Extra high temperature material (SO354 XHT) shows no pronounced loss of readability when exposed to temperatures up to 1200°F.
exterior exposure	Weatherometer tests indicate no loss of readability after 400 hours of accelerated testing (estimated equivalent 20 years). This means users may expect years of outdoor exposure without affecting bar code readability.
chemical resistance	Most chemicals have no effect on readability. Strong acids or alkalies may have degrading effects. Teflon treatments available for applications requiring paint shedding and/or resistance to strong acids or alkalis.
solvent resistance	Solvents have no effect on readability.
packaging	Includes bagging, stripping, sheeting, and punch and retain.
symbologies	All common symbologies available including code 3 of 9, 2 of 5, 128 and Datamatrix.

These product characteristics are written to help define typical label performances under varying environmental conditions. **The best evaluation of performance will result by testing a sample in actual conditions.** Samples may be obtained by contacting your Camcode representative.